

DATE	BY	CHKD	REV

NOTES:

FOUNDATIONS:
All foundations to Stru' Eng's design to approval of Building Control Officer.

STRUCTURE:
200mmØ painted HRS columns to Stru' Eng's details.
All structure to have 1 hour fire resistance in accordance with Part B Building Regulations.
Exposed steels (infillscifi) to be painted with intumescent paint. Internal steels to be clad with 12.5mm Gyproc Firline boards in accordance with manufacturers recommendations.

GROUND FLOOR ENTRANCE:
Reinforced concrete slab to Stru' Eng's details with Bituthene liquid DFC applied directly to slab.
54mm rigid Celotex double-R GA2000 insulation boards and 1200g polythene vapour control layer laid with all joints taped and lapped.
Nom. 75mm cement/sand screed with 300x300mm slate tile floor finish to entrance landing.

Walls: 100mm rendered blockwork outer leaf. 50mm cavity with 50mm Rockwool insulation batts and 100mm Thermalite Shield 2000 inner leaf. 13mm plaster finish internally.
Insulated vertical DPC's to window and door reveals - Type D. Cavity Trays Ltd.
Horizontal DPC min. 150mm above finished ground level.

Precast concrete stairs to specialists details. 50mmØ solid oak handrails

FIRST & SECOND FLOORS
External Walls: 103mm Ferrocim bricks in reclaimed London Stock bricks to match existing with 50mm cavity fully filled with 50mm Rockwool insulation batts.
100mm Thermalite Shield 2000 inner blockwork leaf with 13mm plaster finish.
Walls to achieve min 'U' value of 0.45w/m sq.K.

Insulated Type D vertical DPC's by Cavity Trays Ltd. to reveals of window & door jambs.
Walls constructed in 1:3 cement/sand mortar below DPC & 1:1:6 cementlime/sand mortar above DPC level.
Perpendis fully filled with mortar and facing brickwork pointed up as work proceeds. Cavities kept clear of debris and mortar droppings.
Lintels over openings in external wall generally galvanised MS type by IG Lintols (refer to window schedule) and to have min. 150mm bearing each end.

Cavity tray DPC's with stopped ends by Cavity Trays Ltd. above all openings.
Perpendis left open in brick course immediately above external openings and stopped immediately above internal openings.
Walls to be strapped to floors above ground level at max. 2m crcs. with galvanised MS straps with min cross section of 30x5mm. Straps at right angles to joists to be taken over at least 3no. joists with min 39mm solid noggings between joists and between the first joist and wall. Located beneath straps. Straps fixed down securely to joists and noggings.
Structural steels bearing on 10KN concrete padstones built into blockwork.

FIRST FLOOR:
Steel structure to Stru' Eng's details with nom. 200mm thick hollow pre cast concrete planks by Milbank Floors to Stru' Eng's details.
Wirsbo floating floor proprietary under floor heating system with nom. 70mm insulation installed in accordance with manufacturers recommendations.
25mm oiled timber boards floor finish supplied by Yunkers or similar approved.

300x300mm ceramic tile finish to bathroom on 18mm WPB plywood floating floor with BAL Fastflex adhesive.
12.5mm plasterboard ceilings with skim coat and painted finish.

INTERNAL PARTITIONS:
Compartment walls to stailwell to have min 1 hour fire resistance built in 215mm Thermalite Party Wall blockwork with 13mm plaster finish.
Proprietary type cavity barriers provided at junctions between external walls and compartment walls between properties and at the top of such walls to provide suitable fire resistance in accordance with Part B Building Regulations.

Internal partitions to be 75x50mm treated sw studs with 2no. layers plasterboard each side. Boards lapped and skimmed with cavity fully filled with insulation batts. 100mm flush skirting with shadow gap detail.

STAIRS: Purpose made timber stairs above first floor level.

A.	NO.	DATE	BY	CHKD	REV

PROJECT
DAWES ROAD INFILL
SALISBURY MEWS, DAWES ROAD
FULHAM

CLIENT
MILDWISH DEVELOPMENTS
SALISBURY MEWS

DRAWING
GENERAL ARRANGEMENT
GROUND & FIRST FLOORS
UNITS 5 & 6

SCALE
1:50

DATE
01.12.01

DRAWN
LJP

CHECKED
LJP

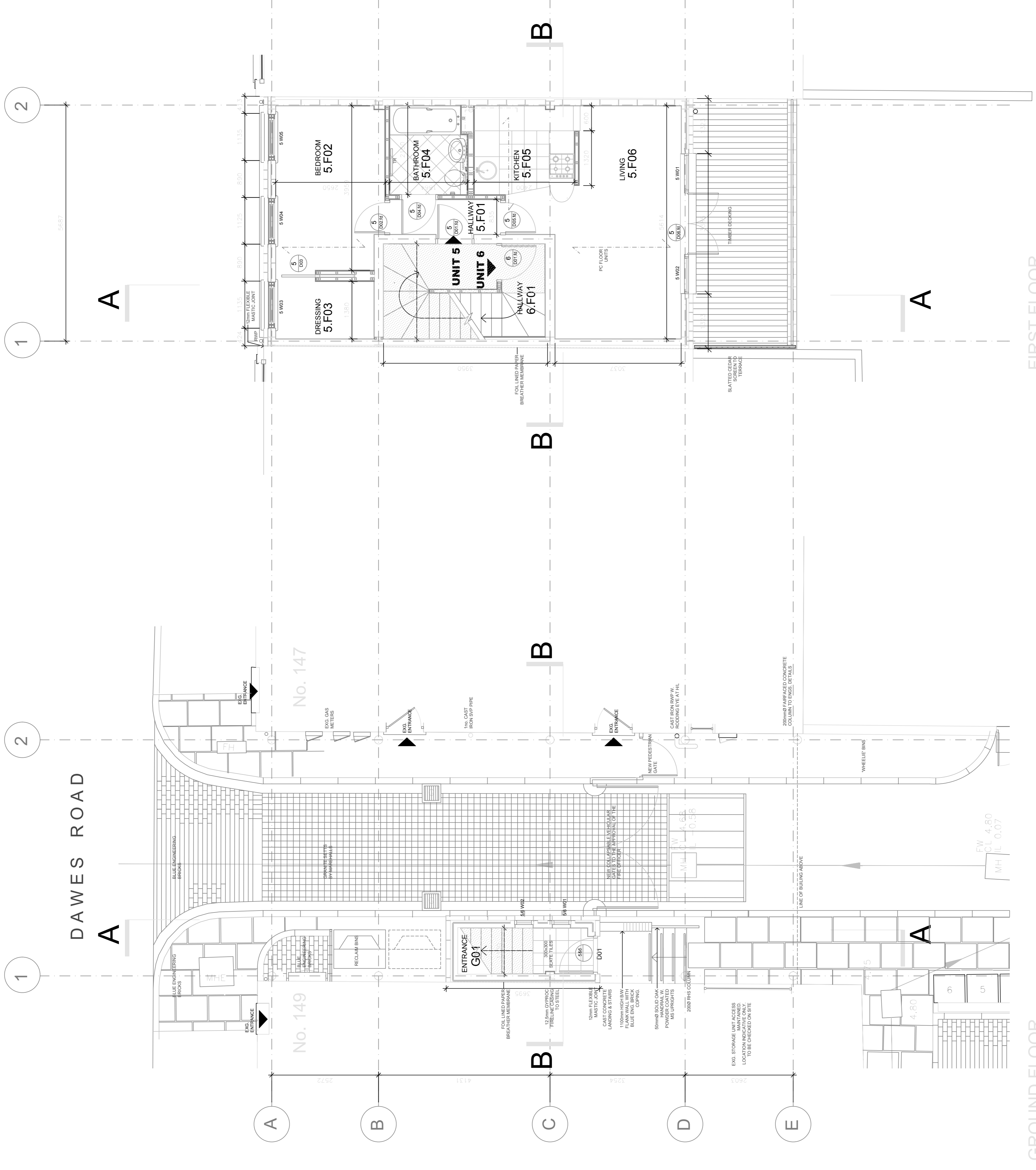


ANDY STRANGE ASSOCIATES

Architecture
Master Planning
Conservation

59 Kings Road, Godalming, Surrey, GU7 3EX.
Fax: 01483 427189. Mobile: 07770 421624
e-mail: andystrange@btinternet.com.

DRAWING NO.
REV.



FIRST FLOOR

GROUND FLOOR