

NO.	REVISIONS	DATE	INITIAL
A.	EMPTY INCREASED IN EXT WALLS, GENERAL REVISIONS	24.12.01	LJP

NOTES:

SECOND & THIRD FLOORS
 Steel structure to Stru' Eng's details. Steel lined with 12.5mm Gyproc Fireline boards. 200x50mm C16 treated sw joists @400 c/c. All floor and roof timbers to be pressure impregnated with preservative against timber decay and insect attack.
 Wirsbo underfloor heating system for timber suspended floors w. proprietary heat emission plates fixed to 100x25mm battens laid in accordance with manufacturers recommendations. 100mm Rockwool insulation laid beneath system.
 Floor joists spanning in excess of 2.5m to be strutted by one or more rows of solid or herringbone strutting. 1 row to be provided at mid-span of joists having a span greater than 2.5m and 4.5m. 2 rows to be provided at one third span positions of joists having a span greater than 4.5m.
 Solid strutting to be at least 38mm extending at least 0.75x depth of joist. Herringbone strutting to be at least 38x38mm and not to be used when distance between joists is greater than 3x depth joist. Solid packing to be installed on line of strutting between wall and adjacent joist.
 25mm oiled timber boards floor finish supplied by Yunkers or similar approved.
 300x300mm ceramic tiled finish to bathrooms on 18mm WPB plywood deck laid with BAL fast-flex adhesive. Noggings between joists at 300c/c. and plywood with underside sealed screwed to joists and noggings at 300c/c.
 Ceilings generally 12.5mm plasterboard taped and skimmed on battens.

INTERNAL PARTITIONS:
 140mm Thermalite Hi-strength 7 blockwork to stairwell with 13mm plaster finish. Proprietary type cavity barriers provided at junctions between external walls and compartment walls between properties and at the top of such walls to provide suitable fire resistance in accordance with Part B Building Regulations.

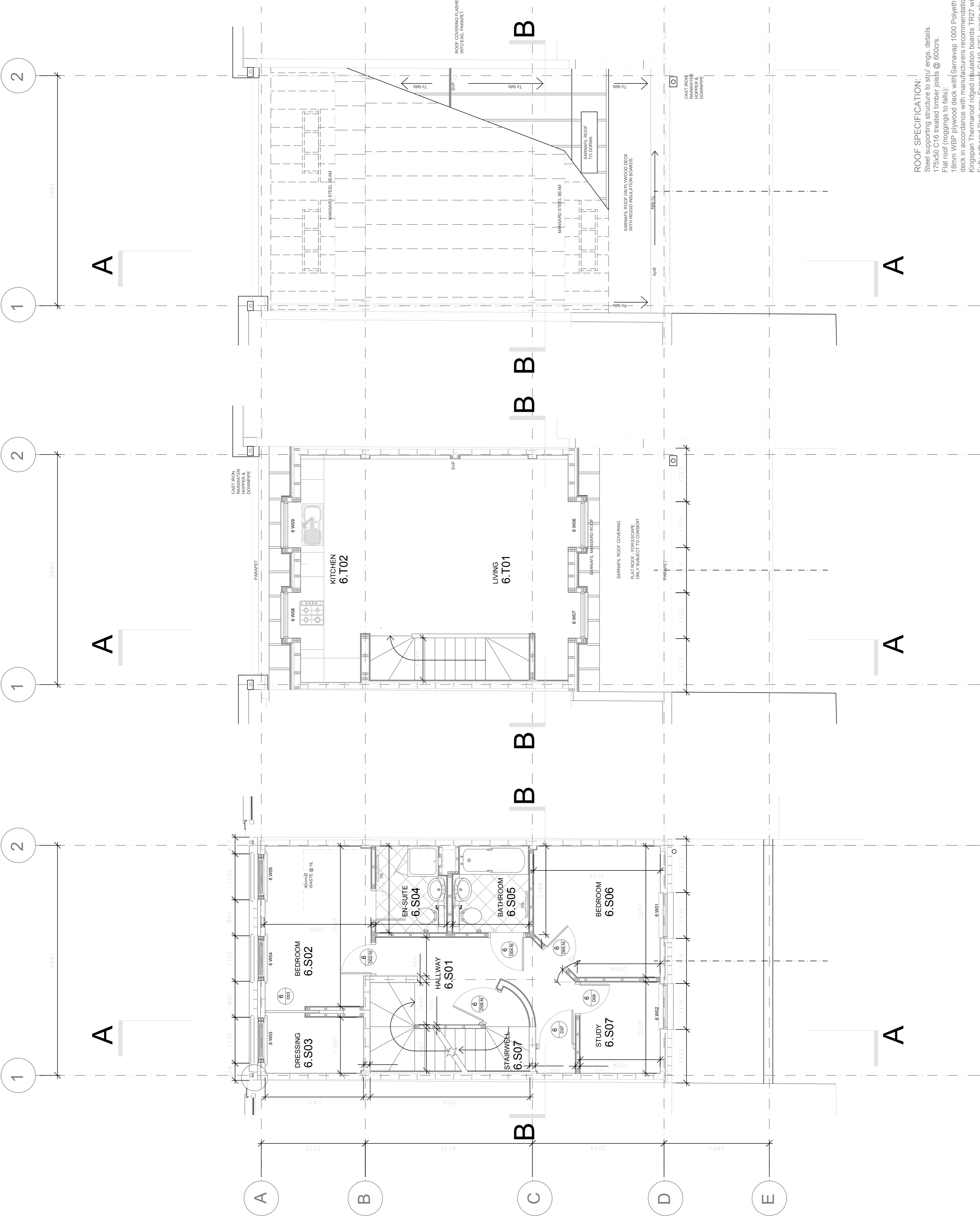
Internal partitions to be 75x50mm treated sw studs with 2no. layers plasterboard each side. Boards taped and skimmed with cavity fully filled with insulation batts. 100mm flush skirting with shadow gap detail.

DOORS:
 Internal doors to be 30min fire in accordance with Appendix B, Part B Building Regulations. Beech veneered solid core doors by Dekorator. Refer to Door Schedule.

WINDOWS:
 Purpose made softwood double glazed sliding sash windows to Dawes Road elevation - refer to Window Schedule.
 Double glazed softwood windows/double doors to rear elevation and dorma windows by John Carr.
 Refer to Window Schedule.

Switches/ Sockets generally: Brushed stainless steel Edge Range by MK Electrical
VENTILATION: Rapid ventilation provided by opening lights in new windows and doors to rooms. Background ventilation provided by trickle ventilation slots in the top of new windows.
 Habitable rooms: 8000mm²
 Kitchen: 4000mm²

Extract Ventilation:
 Kitchen: mechanical extract fan providing 30 litres/ sec. above hob to be specified by Kitchen specialist.
 Bathrooms: Mechanical extract providing 15 litres/sec. operated by light switch with 15 mins overrun facility to Mech Eng's. spec. 'Airs inlet of 10mm under doors as indicated on door schedule.
 Drainage & Sanitary Installations: to Mech Eng's. spec. Refer to Sanitary Schedule for fixtures & fittings.



ROOF SPECIFICATION:
 Steel supporting structure to stru' eng's. details.
 Flat roof (noggings to falls).
 18mm WPB plywood deck with Samarap 1000 Polyethylene vapour control layer laid onto of deck.
 Kingspan Thermaclad rigid insulation boards TR27 with 50mm thickness to achieve 0.25w/m²k.
 Fully adhered Dark grey Samafli G410-12EL single ply membrane installed in accordance with manufacturers recommendations with lead roll detail @600c/c.
 Mansard roof - Kingspan Thermaclad TR26 boards mechanically fastened to 18mm WPB deck with vapour control layer and mechanically fastened Dark grey Samafli membrane with lead roll detail at 600c/c.

ROOF

THIRD FLOOR

SECOND FLOOR

ANDY STRANGE ASSOCIATES
 Architecture
 Master Planning
 Conservation

59 Kings Road, Godalming, Surrey, GU7 3EX.
 Fax: 01483 427189. Mobile: 07770 421624
 e-mail: andystrange@btinternet.com.