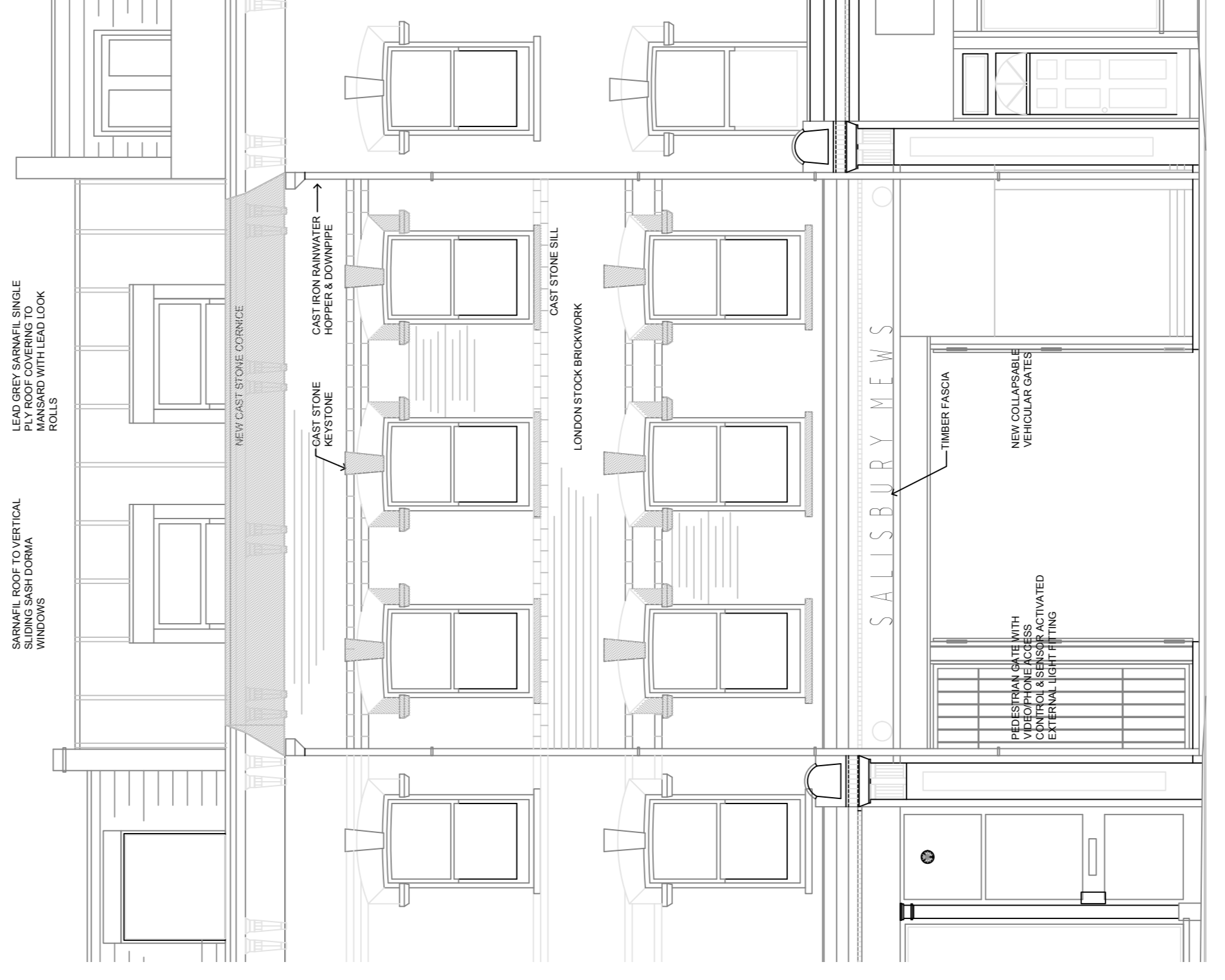
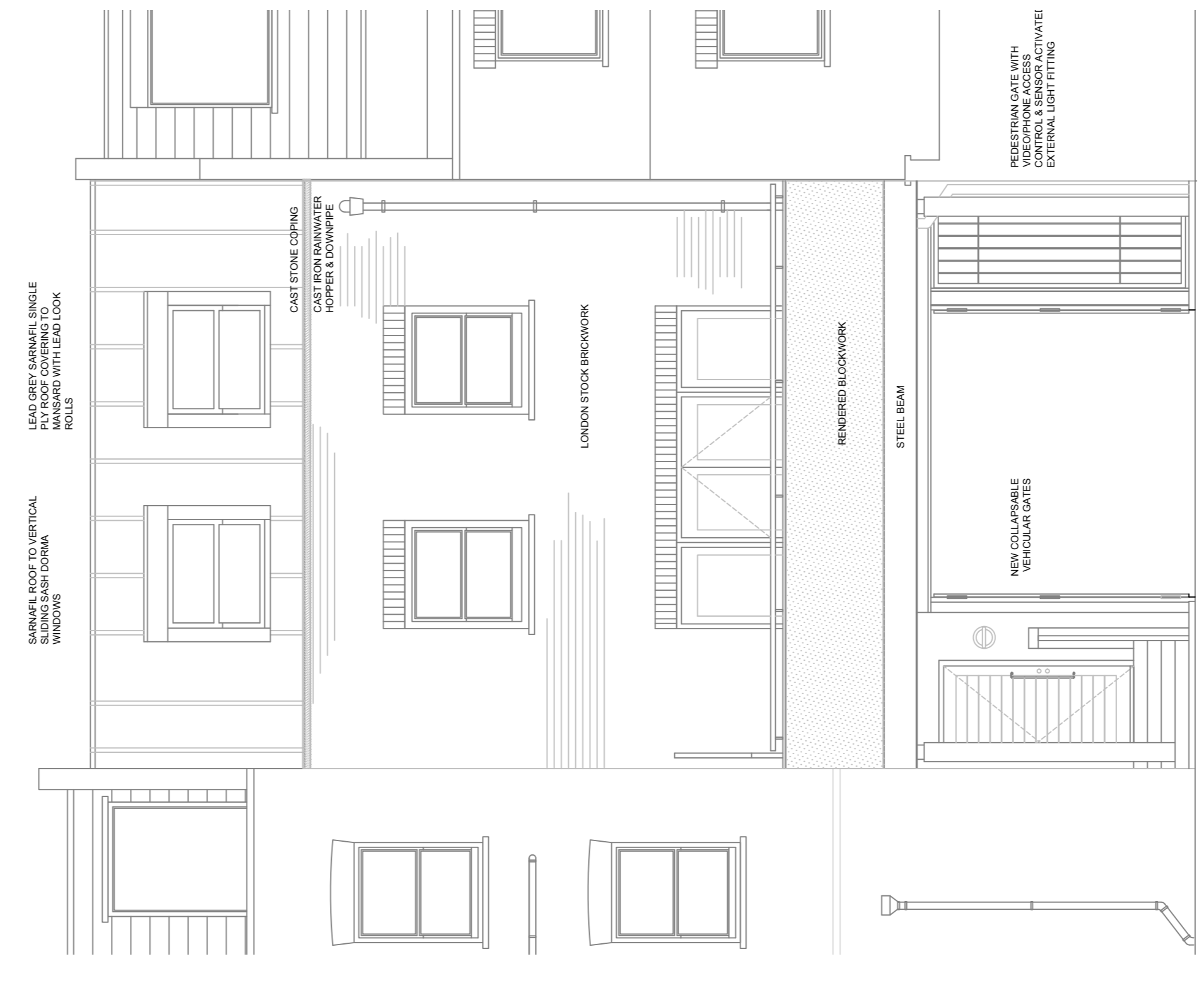


THIS IS A CAD DRAWING AND MAY ONLY BE MODIFIED BY HAND IN ACCORDANCE WITH THE DRAWING

DATE	BY	CHECKED



DAWES ROAD ELEVATION



REAR ELEVATION

NO.	REVISIONS	DATE	INITIAL

PROJECT
 DAWES ROAD INFILL
 SALISBURY MEWS, DAWES ROAD
 FULHAM

CLIENT
 MILDWISH DEVELOPMENTS
 SALISBURY MEWS

DRAWING
 ELEVATIONS
 UNITS 5 & 6

SCALE
 1:50

DATE
 01.12.01

DRAWN
 LJP

CHECKED



**ANDY
 STRANGE
 ASSOCIATES**
 Architecture
 Master Planning
 Conservation

59 Kings Road, Godalming, Surrey, GU7 3EX.
 Fax: 01483 427189. Mobile: 07770 421624
 e-mail: andystrange@btinternet.com.

DRAWING NO. REV.