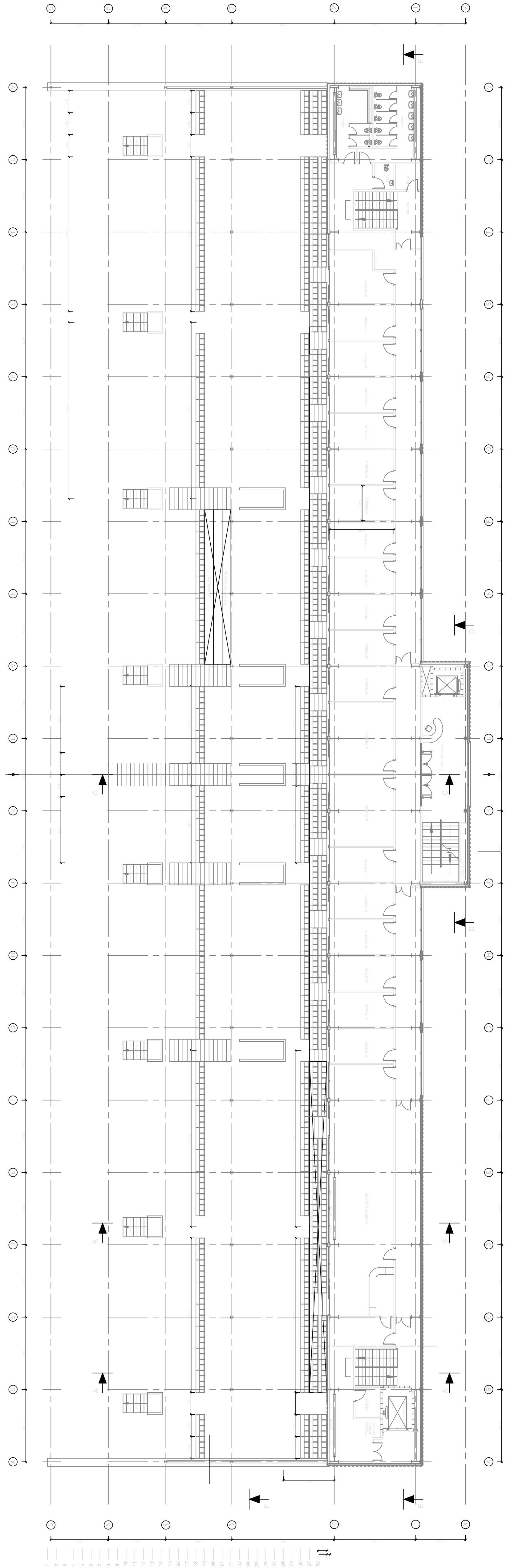


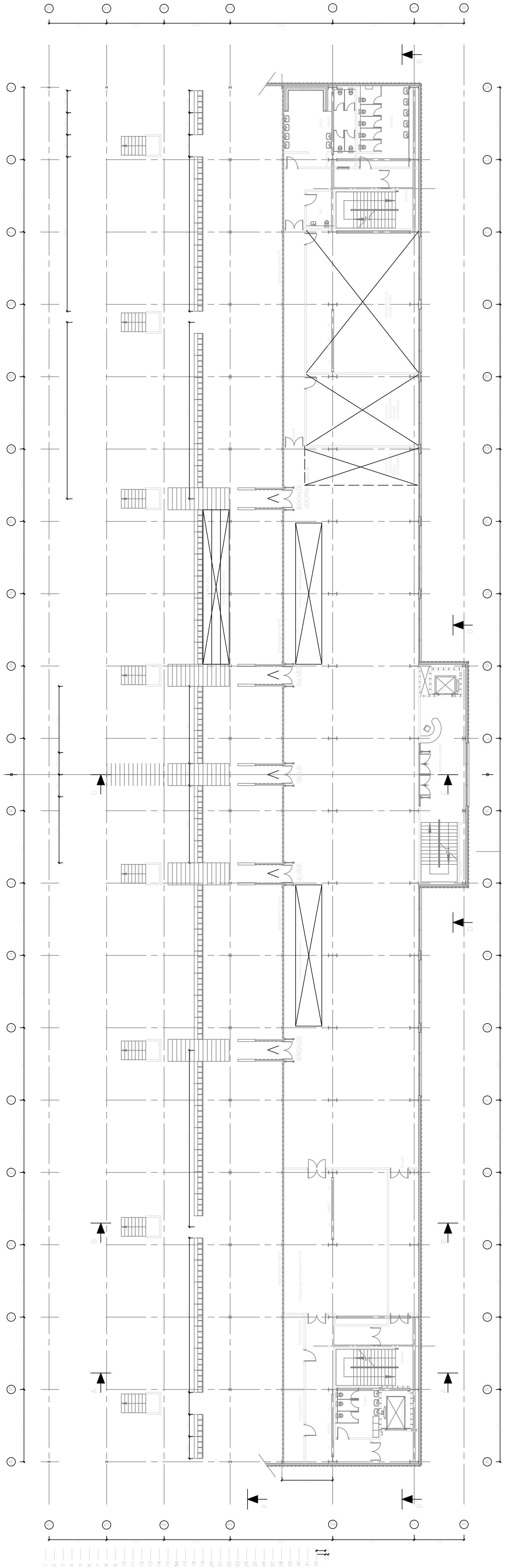
THIS PLAN AND DRAWING ARE NOT TO BE REPRODUCED OR TRANSMITTED IN ANY FORM OR BY ANY MEANS, ELECTRONIC OR MECHANICAL, WITHOUT THE WRITTEN PERMISSION OF A.S.A. ARCHITECTS

NO.	REVISIONS	DATE	INITIAL

PRELIMINARY



SECOND FLOOR



PROJECT

REPLACEMENT SOUTH STAND
G.R.F.C. KINGSHOLM ROAD.



SLICK SEATING SYSTEMS LIMITED

FOR: GLOUCESTER RUGBY FOOTBALL CLUB

DRAWING

FIRST & SECOND FLOOR
DEVELOPMENT DRAFTS

SCALE 1:200 DATE 23.4.05 AS
DRAWN CHECKED



A.S.A. ARCHITECTS

Architecture
Master Planning
Conservation

Island Cottage,
Tamar Street, Torpoint, Cornwall, PL11 2AW.
Tel: 01752 810000
Fax: 01752 810004
Email: info@asa-architects.com