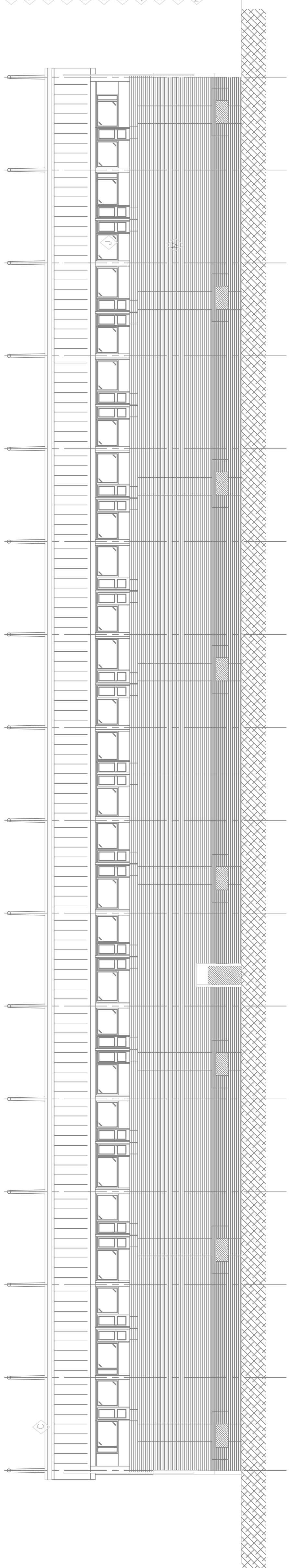


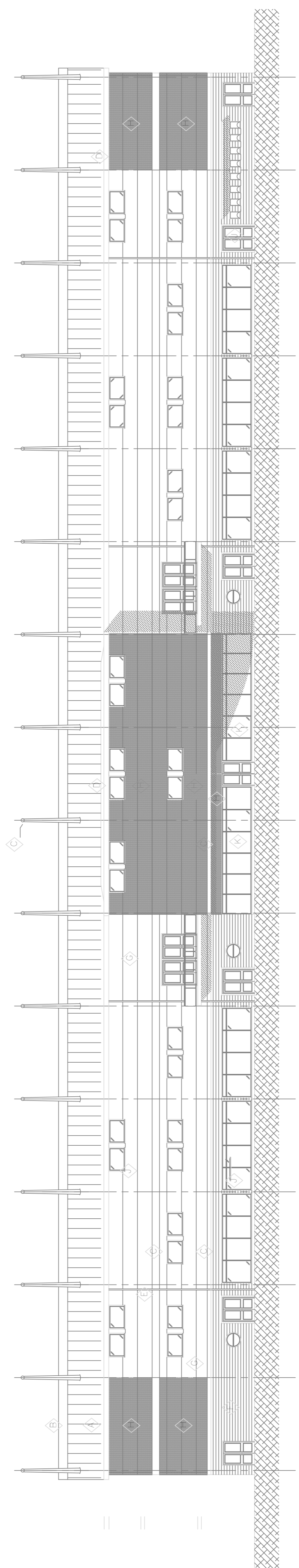
THIS IS A CAD DRAWING AND MAY ONLY BE MODIFIED BY HAND IN ACCORDANCE WITH THE PROVISIONS

REVISION	DATE

- Ⓐ KALZIP STANDING SEAM ALUMINIUM ROOF SHEETS
- Ⓑ FRONT 1/3 OF ROOF IN CLEAR POLYCARBONATE
- Ⓒ FLASHING & SPANDREL DETAILS IN RED PPC STEEL
- Ⓓ GUTTER & FITTING DETAILS IN RED PPC STEEL
- Ⓔ RAINWATER DOWNPIPES IN GREY UPVC
- Ⓕ BRICK TO MATCH LOCAL RED.
- Ⓖ KINGSpan COMPOSITE WALL PANELS IN GOOSEWING GREY
- Ⓗ KINGSpan COMPOSITE WALL PANELS IN MERLIN GREY
- Ⓙ KINGSpan COMPOSITE WINDOWS/ VENTS/DOORS IN BLUE
- Ⓚ SMOKE GREY TINT GLASS SCREEN
- Ⓛ CLEAR CLADDING IN TRANSLUCENT POLYCARBONATE SHEET
- Ⓜ PLASTIC SEATING IN RED WITH WHITE DETAILING



NORTH ELEVATION



SOUTH ELEVATION

NO.	REVISIONS	DATE	INITIAL
B	MINOR REVISIONS	10.12.04	AS
A	DEVELOPMENT REVISIONS	16.11.03	AS

PROJECT

REPLACE SOUTH STAND
G.R.F.C. KINGSHOLM ROAD.

CLIENT

GLOUCESTER RUGBY FOOTBALL CLUB

DRAWING

ELEVATIONS

SCALE	DATE	DRAWN	CHECKED
1:200	25.10.04AS		



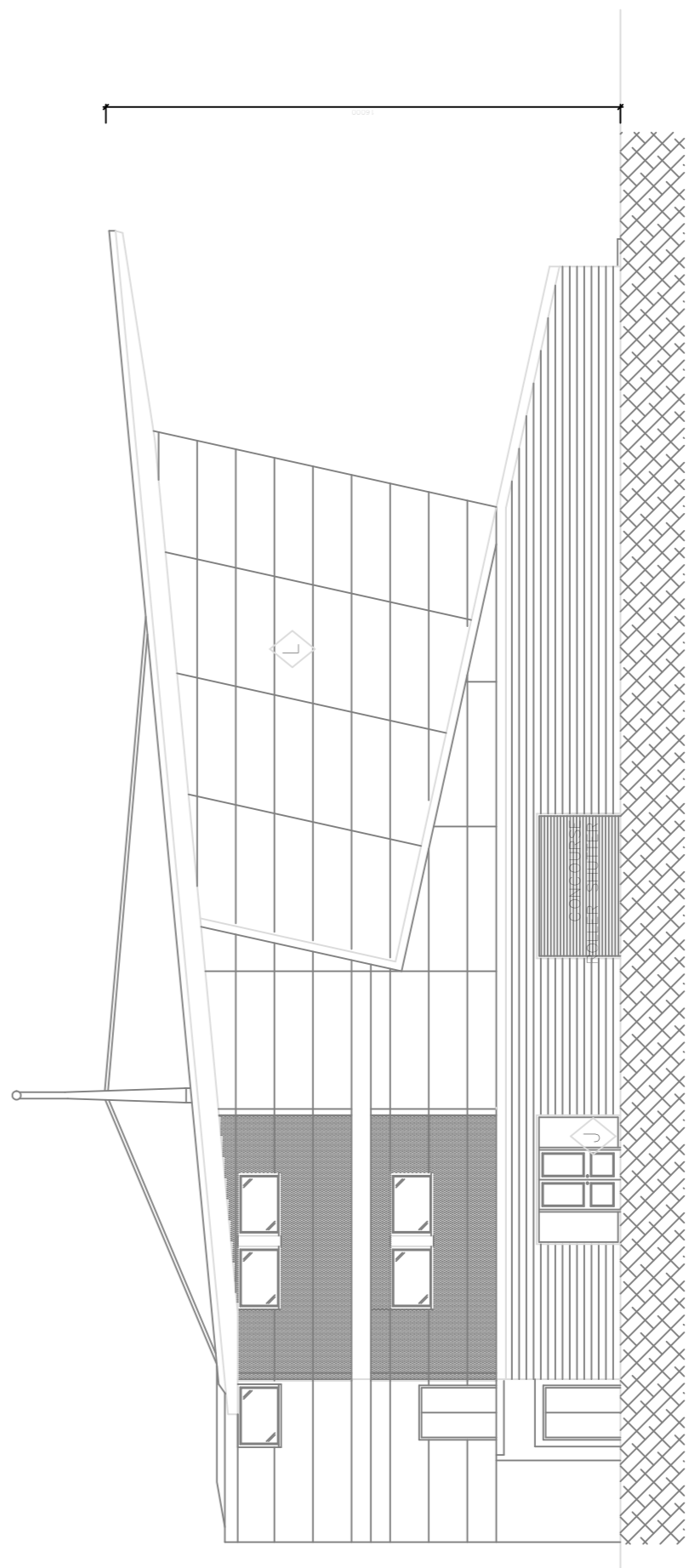
A.S.A. ARCHITECTS

Architecture

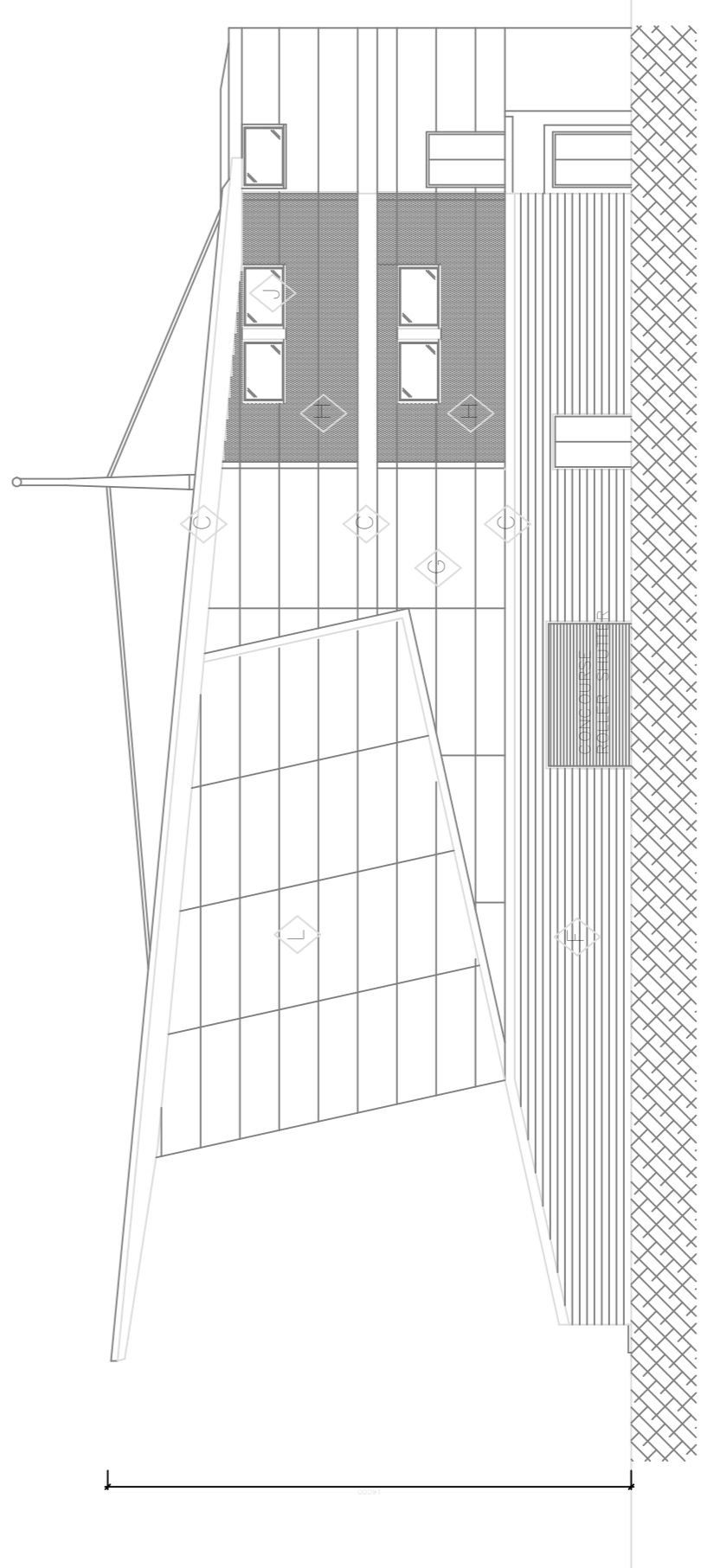
Master Planning

Conservation

59 Kings Road, Godalming, Surrey, GU7 3EX.
Fax: 01483 427189 . Mobile: 07770 421624
e-mail: andystrange@btinternet.com.



EAST ELEVATION



WEST ELEVATION