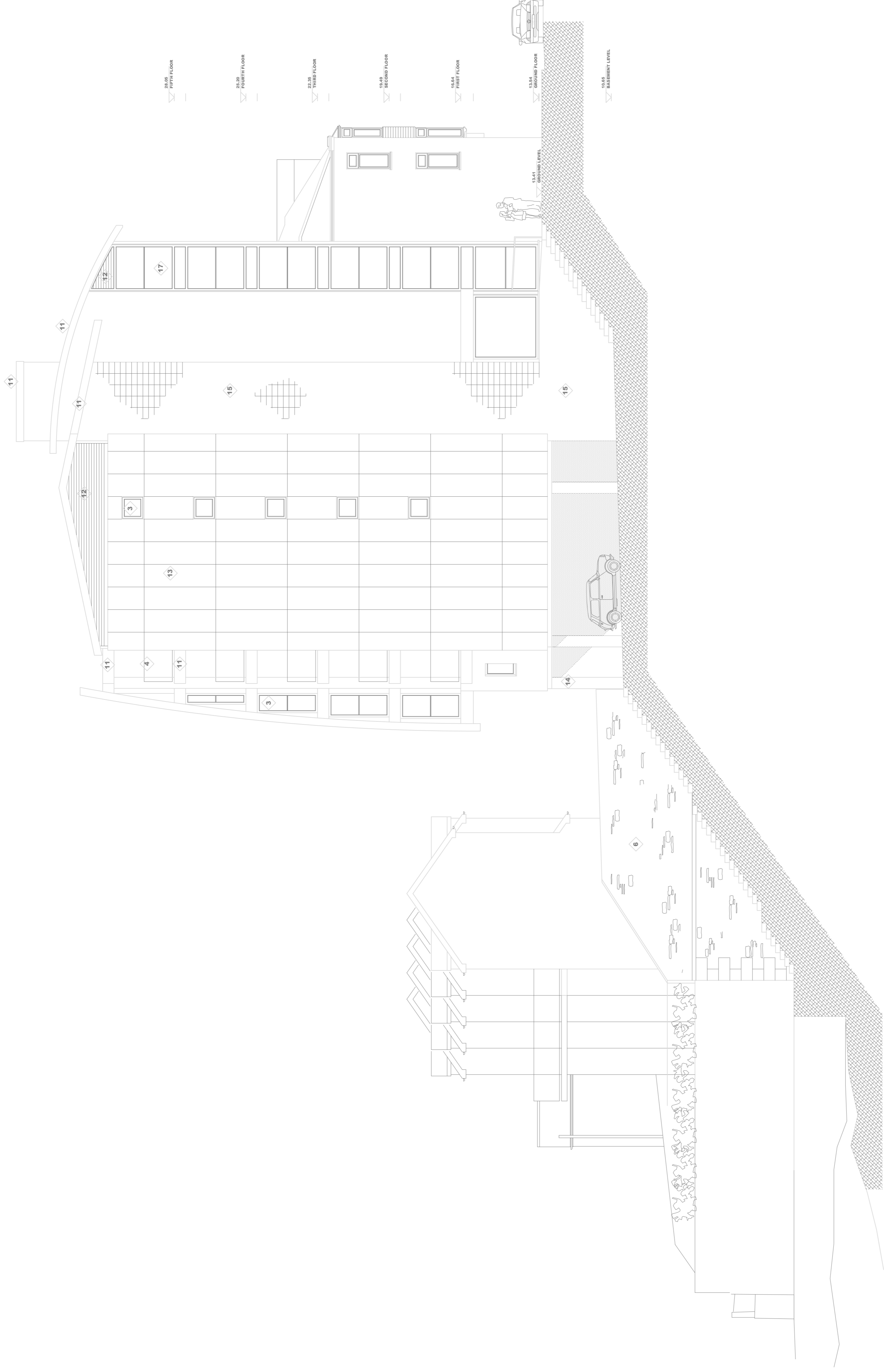


**PRELIMINARY PLANNING APPLICATION DRAWINGS  
NOT FOR ISSUE**

- MATERIALS:**
1. NATURAL SLATE, GIBBY.
  2. HORIZONTAL ALUMINIUM CLADDING.
  3. POLYCARBONATE GLAZING WINDOW, PFC GRANITE FRAME.
  4. BLACK PAINTED BRASS.
  5. POLYCARBONATE GLAZING WINDOW, PFC GRANITE FRAME.
  6. RECYCLED BRASS HANDLES.
  7. RECYCLED BRASS HANDLES.
  8. RECYCLED BRASS HANDLES.
  9. POLYCARBONATE GLAZING WINDOW, PFC GRANITE FRAME.
  10. POLYCARBONATE GLAZING WINDOW, PFC GRANITE FRAME.
  11. ALUMINIUM CURTAIN WALL SYSTEM.
  12. ALUMINIUM CURTAIN WALL SYSTEM.
  13. SATIN FINISH BLACK PAINT, GIBBY BRASS SCREEN PANELS (GIBBY).
  14. ALUMINIUM CURTAIN WALL SYSTEM.
  15. STYCO'S BRASS PORTLAND CEMENT BRICK CONCRETE FACE BLOCKS.
  16. ALUMINIUM CURTAIN WALL SYSTEM.
  17. ALUMINIUM CURTAIN WALL SYSTEM GLAZED SYSTEM.



NO.	REVISIONS	DATE	INITIAL

**PROJECT**  
**RESIDENTIAL DEVELOPMENT**  
**HARBOUR LIGHTS NIGHTCLUB SITE**  
**FORE STREET, TORPOINT**

**DEMOLITION OF NIGHT CLUB,  
 FIVE WATERSIDE MEWS TOWNHOUSES,  
 INTEGRAL GARAGING AND SITE PARKING,  
 BASEMENT SERVICING,  
 COMMERCIAL PLATE AT GROUND LEVEL,  
 FIVE LUXURY APARTMENTS,  
 PUBLIC SPACE PROVISION TO TOWN WITH  
 TWO NEW ACCESS STAIRS TO WATERSIDE  
 LINKING WATERSIDE PATH WITH TOWN  
 CENTRE.**

**CLIENT**  
**MIR S HUGGINS**  
**HUGGINS BROS MARINE LTD**  
**CARBIELE WHARF, TORPOINT, PL11 2RE.**

**DRAWING**  
**WEST ELEVATION**

SCALE	DATE	DRAWN	CHECKED
<b>1:100</b>	<b>3.8.14</b>	<b>AS</b>	<b>-</b>



Island Cottage  
 Tamar Street, Torpoint, Cornwall, PL11 2AW.  
 e-mail: andystrange@btinternet.com  
 Tel: 01752 814004. 07770 421624  
 www.andystrangearchitects.com

DRAWING NO.	REV
<b>1430-PL-115</b>	<b>-</b>

CAD NO. C:\DRAWINGS\1430\115

CLIENTS ARE ADVISED THAT THE INFORMATION CONTAINED HEREIN IS UNCLASSIFIED AND NOT BE REPRODUCED TO THE PUBLIC OR TO ANY OTHER PARTY WITHOUT THE WRITTEN PERMISSION OF ASA ARCHITECTS. ANY REPRODUCTION OF THIS DOCUMENT WITHOUT THE WRITTEN PERMISSION OF ASA ARCHITECTS IS STRICTLY PROHIBITED. ASA ARCHITECTS ACCEPTS NO LIABILITY FOR ANY LOSS OR DAMAGE OF ANY KIND ARISING FROM THE USE OF THIS DOCUMENT. ALL INFORMATION CONTAINED HEREIN IS PROVIDED AS IS WITHOUT WARRANTY OF ANY KIND, INCLUDING WARRANTIES OF MERCHANTABILITY AND FITNESS FOR A PARTICULAR PURPOSE. ALL INFORMATION CONTAINED HEREIN IS PROVIDED AS IS WITHOUT WARRANTY OF ANY KIND, INCLUDING WARRANTIES OF MERCHANTABILITY AND FITNESS FOR A PARTICULAR PURPOSE.